

Mission Spending Plan 2020



Southeastern Iowa Synod
Evangelical Lutheran Church in America
God's work. Our hands.

Thank you for supporting the Southeastern Iowa Synod in
2019 through your congregational gifts.
See 2019 by the numbers and the financial plan for 2020.



138

congregations in

34

 counties
(and 2 states)

Congregations
gathered under the
2019 theme
ONE Bread
ONE Body

\$557,000

spent in support of faith communities
and partner ministries like LSI, seminaries,
Lutheran Campus Ministries and
anti-hunger projects



\$443,000

spent in support of congregations
and leaders



5

new pastors
ordained and
serving in ministry



35

congregations
helped with
leadership
transitions and
mobility needs

People from

21

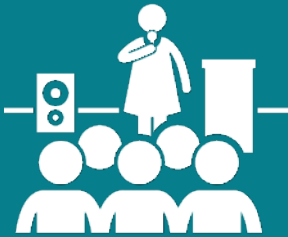
congregations
participated in
congregational
vitality training



740 individuals receive our Monday morning
email newsletter

Sign up at seiasynod.org/follow-us

More than 7,000 people reached with Bishop Burk's Des Moines Register opinion column on climate change.



343

voting members and 52 visitors in attendance at Synod Assembly

21

representatives from the Southeastern Iowa Synod who participated in the ELCA Churchwide Assembly



20

individuals in the candidacy process to become pastors or deacons

250

people who participated in the Lenten daily devotions



YOUR REGULAR OFFERING



YOUR CONGREGATION



YOUR SYNOD



YOUR CHURCHWIDE ORGANIZATION



When you make a financial gift to your congregation a portion of that gift is set aside for Mission Support.

Congregations send Mission Support dollars to their synod and synods send some of these dollars to the churchwide organization.

Synods and the churchwide organization use Mission Support to fund regional, national and global ministries.

2020 Spending Plan for Mission Support received in the Southeastern Iowa Synod

- Support Shared with Churchwide Ministries
- Synod Investment in Congregation Vitality
- Synod Support of Leadership Development
- Synodical Witness
- Management and General

